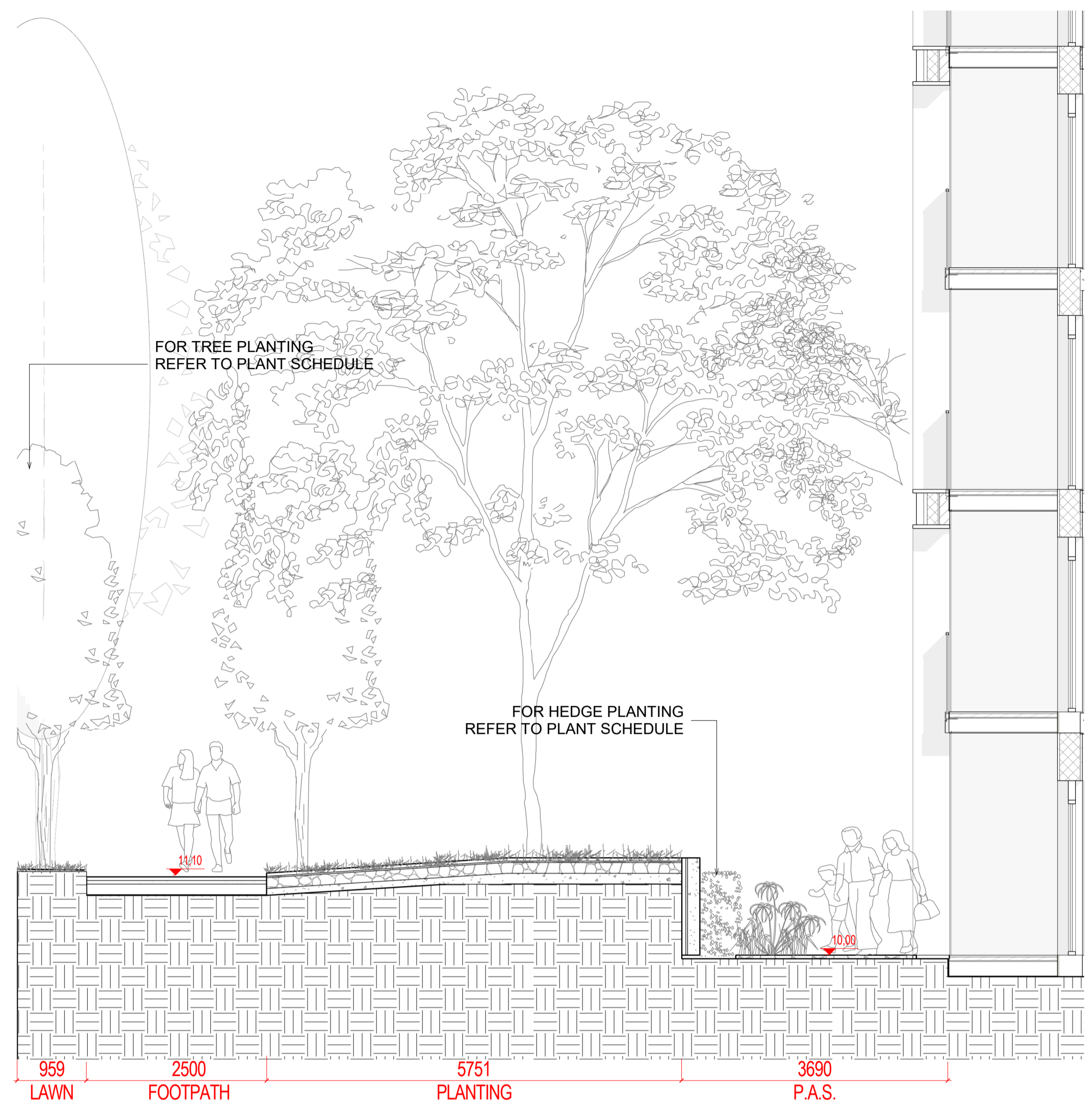


NOTE
 ALL DIMENSIONS TO BE CHECKED ON SITE
 THIS DRAWING IS TO BE READ IN CONJUNCTION WITH RELEVANT CONSULTANTS DRAWINGS
 NO PART OF THIS DOCUMENT MAY BE REPRODUCED OR TRANSMITTED IN ANY FORM OR STORED IN ANY RETRIEVAL SYSTEM OF ANY NATURE WITHOUT THE WRITTEN PERMISSION OF THE LANDSCAPE ARCHITECT AS COPYRIGHT HOLDER EXCEPT AS AGREED FOR USE ON THE PROJECT FOR WHICH THE DOCUMENT WAS ORIGINALLY ISSUED.
 FOR DRAWING INDEX, GENERAL NOTES, REFER TO DWG L1-001

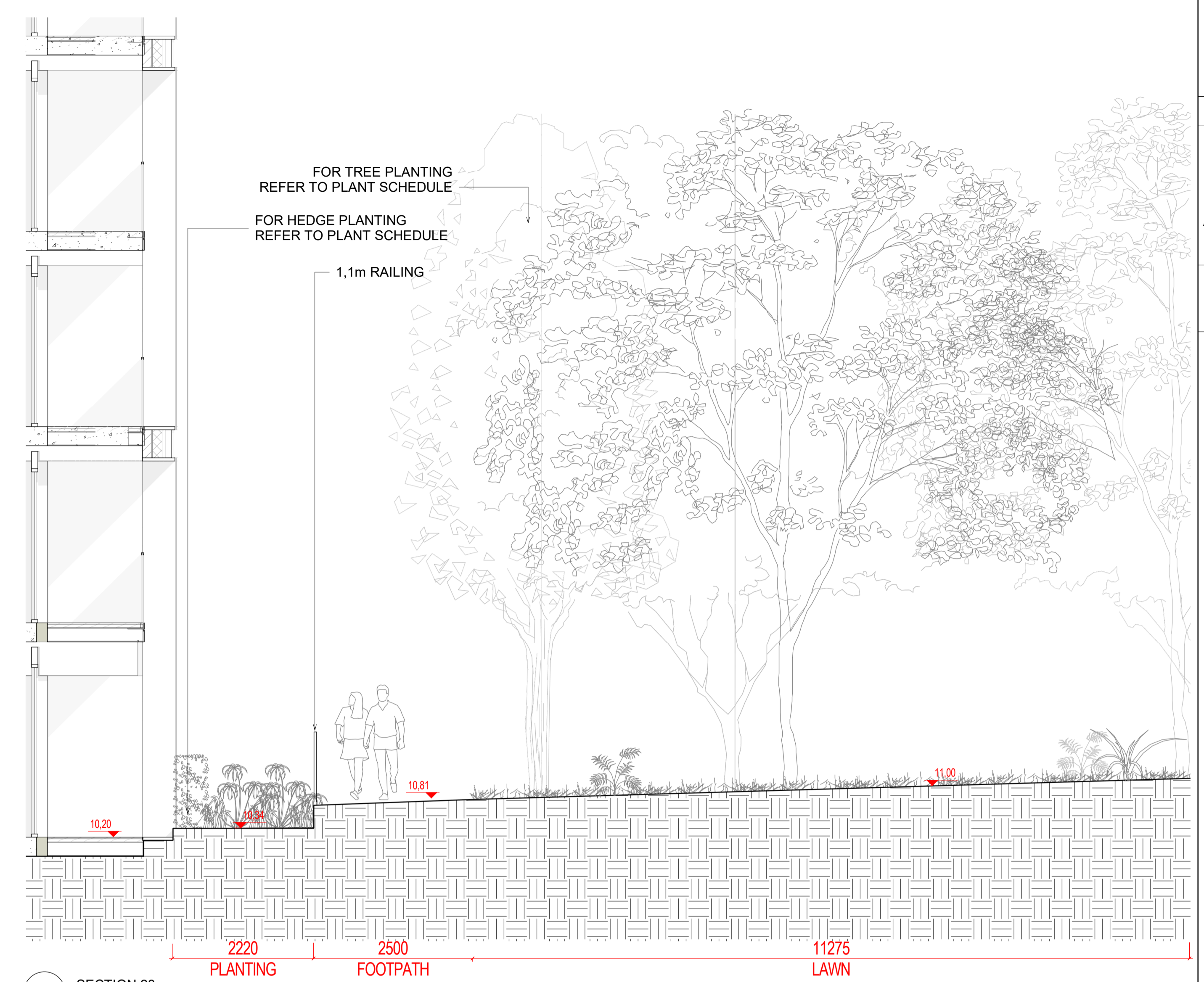
CLIENT:

CWTC Multi Family ICAV
 Acting on behalf of its sub-fund DBTR DR1 Fund

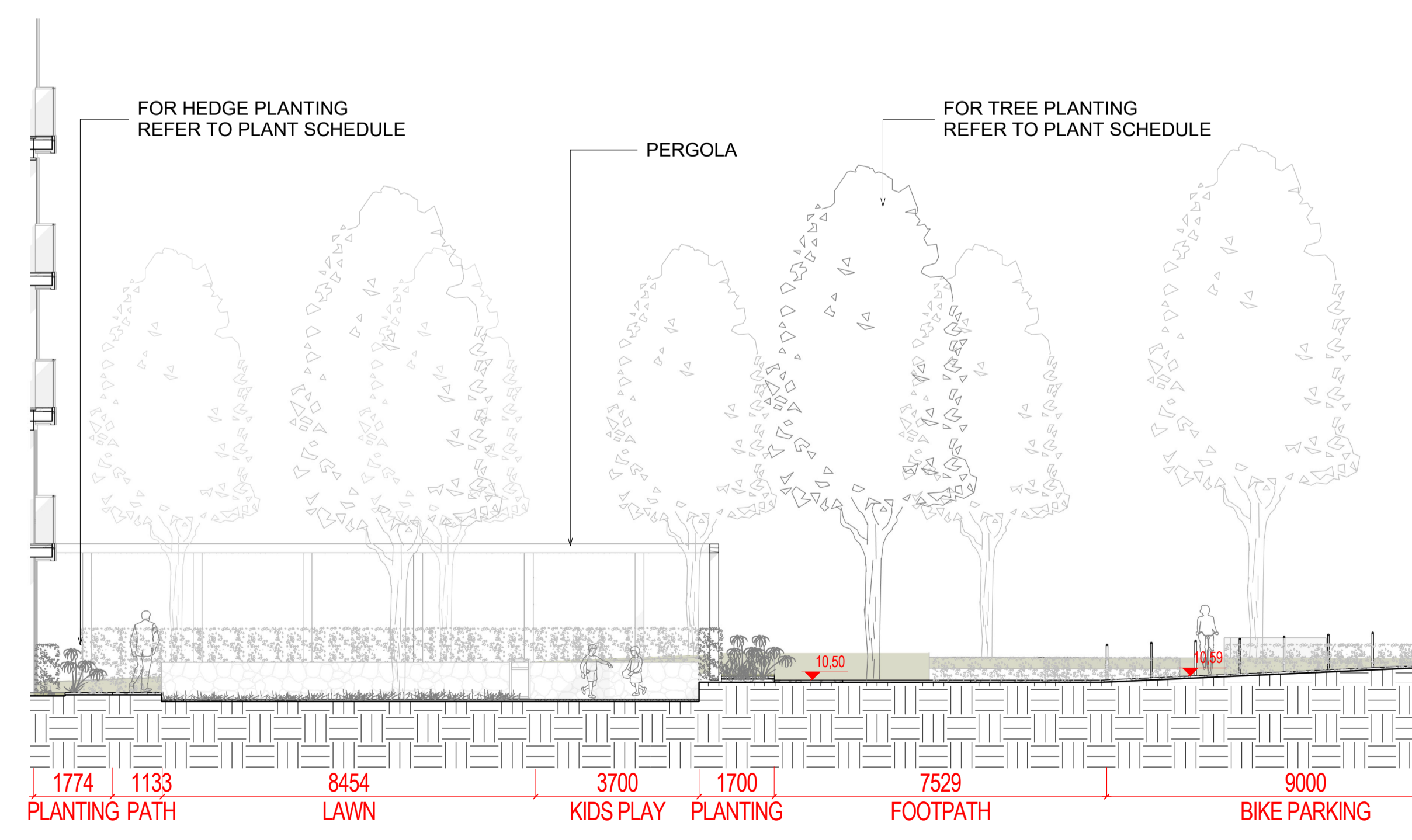
ARCHITECTS: **o mahony pike HJL**
O'Donnell+Thomey ncculloughmulvinarchitects



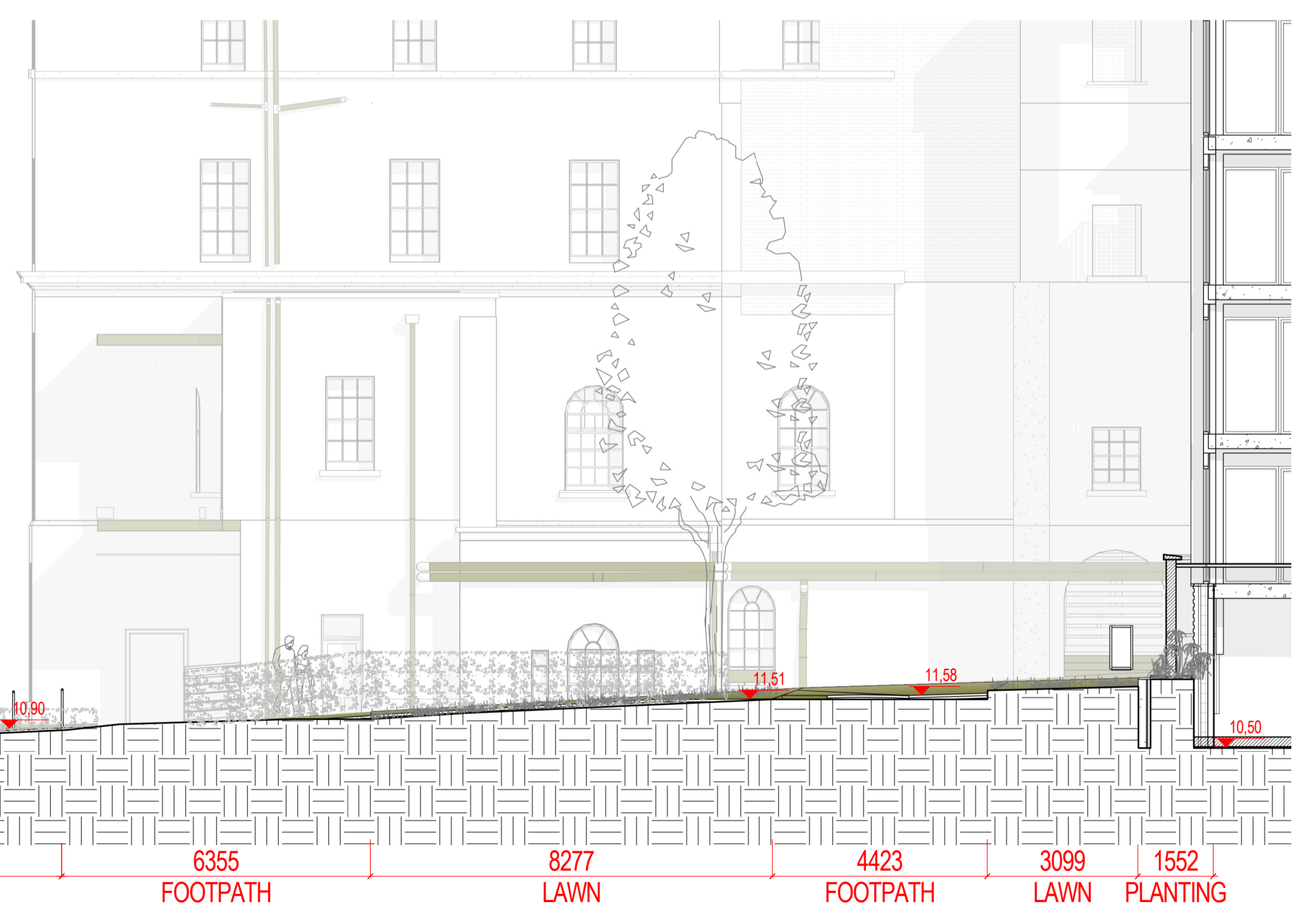
1 SECTION 26
 1:50 @A1



3 SECTION 28
 1:50 @A1



2 SECTION 27
 1:100 @A1



BIM 360://Cloniffe/CLN-NMP-ZZ-M3-002.rvt			

REVISIONS			
Job No.	15A5A	Drawn By	RM
Dwg No.	L1-808	Checked By	JM
Scale	As indicated @A1	Date	July 2021

JOB DESCRIPTION	
Site	Holy Cross College, Cloniffe Road, Dublin 3 and Drumcondra Road Lower, Drumcondra, Dublin 9
Project	Holy Cross College SHD
Title	SECTION - SHEET 08 OF 28